



ISSN: 2230-9926

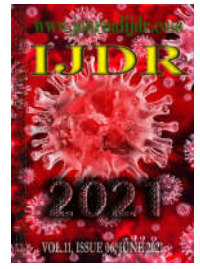
Available online at <http://www.journalijdr.com>

IJDR

International Journal of Development Research

Vol. 11, Issue, 06, pp. 47958-47961, June, 2021

<https://doi.org/10.37118/ijdr.22186.06.2021>



RESEARCH ARTICLE

OPEN ACCESS

CASE STUDY OF COVID-19 IN PATIENTS ADMITTED TO A CAMPAIGN HOSPITAL IN THE CITY OF RECIFE: A RETROSPECTIVE STUDY

Simone Souza de Freitas¹, Mariana Galdino dos Santos Nunes², Maria Fernanda da Silveira Scarcella³, Raniele Oliveira Paulino⁴, Shelma Feitosa dos Santos⁵, Marília Rodrigues Feitoza⁶, Larissa Regina Alves de Moraes Pinho⁷, Lígia Ferreira de Lima⁸, Thaizy de Moraes Ramos⁹, José Jamildo de Arruda Filho¹⁰, Caline Sousa Braga Ferraz¹¹, Cinthia Furtado Avelino¹², Cinthia Regina Albuquerque de Souza¹³, Diana Cristina Didier Souza¹⁴, Luciana dos Santos Lopes¹⁵, Nara Gabriel Nigro Rocha¹⁶, Dirlene Ribeiro da Silva¹⁷, Robson Gomes dos Santos¹⁸, Ailma de Alencar Silva¹⁹, Werlany Ingrid da Silva Barbosa²⁰ and Sandra Sotero Freitas de Araújo²¹

¹Specialist Nurse in Public Health (FUTURA), ²Graduated in Nursing (UNIVERSE), ³Master in Nursing from (UFMG), ⁴Graduated in Nursing (UFPE), ⁵Surveillance Specialist in Health - Syrian Hospital Lebanese, ⁶Graduated in nursing (FACHO), ⁷Graduated in Nursing (FUNESO), ⁸Graduated in Nursing (FACHO), ⁹Graduated in Nursing (UFPE), ¹⁰Graduated in Nursing (UFPE), ¹¹Residency in Child Health Nursing at (IMIP), ¹²Specialist in Didactic-Pedagogical for Nursing Education (UFPE), ¹³Specialization in Family Health (IBPEX), ¹⁴Specialist in Nephrology (IESC), ¹⁵Graduated in Nursing (FACHO), ¹⁶Graduated in nursing (UPE), ¹⁷Graduated in nursing (FASI), ¹⁸ Specialist Nurse in Mental Health (UFPB), ¹⁹Graduated in nursing (UNIVERSE), ²⁰Graduated in nursing (UNIVERSE), ²¹Graduated in Nursing (FACHO)

ARTICLE INFO

Article History:

Received 06th March, 2021
Received in revised form
14th April, 2021
Accepted 03rd May, 2021
Published online 26th June, 2021

Key Words:

COVID-19, Coronavirus disease,
Epidemiological Monitoring,
Public Health.

*Corresponding author:
Simone Souza de Freitas

ABSTRACT

Since it was detected in November 2019, the new coronavirus (SARS-CoV-2), has been expanding across different continents, having been characterized as the cause of the COVID-19 pandemic by the World Health Organization (WHO) in 2020. This is a study descriptive and retrospective of patients diagnosed with COVID-19, hospitalized in a field hospital in the city of Recife in the period from April 2020 to September 2020. The Campaign Hospitals dedicated to the care of clinical patients, victims of infectious diseases, have the following basic characteristics: rapid construction, a large-scale temporary structure. From April 2020 to September 2020, 1,592 cases of Severe Acute Respiratory Syndrome were confirmed in the hospital evaluated. There were 1,502 notifications and among these 90 were not notified because they had already been notified in emergency services with positive results. Regarding the reported cases, 54% of the individuals were male and the most affected were the age group between sixty and sixty-nine years old 363(22.8%). SARS is a notifiable disease; therefore, all suspected cases must be reported and investigated by the health services using the standard Notifiable Diseases Information System (SINAN). This study may provide subsidies to understand the aspects involved in the occurrence of the disease, so that the prevention and coping with COVID-19 are consistent with the assistance provided by health surveillance.

Copyright © 2021, Simone Souza de Freitas¹ et al. This is an open access article distributed under the Creative Commons Attribution License, which permits unrestricted use, distribution, and reproduction in any medium, provided the original work is properly cited.

Citation: Simone Souza de Freitas, Mariana Galdino dos Santos Nunes, Maria Fernanda da Silveira Scarcella et al. "Case study of covid-19 in patients admitted to a campaign hospital in the city of recife: A retrospective study", *International Journal of Development Research*, 11, (06), 47958-47961.

INTRODUCTION

Since it was detected in November 2019, the new coronavirus (SARS-CoV-2), has been expanding across different continents, having been characterized as the cause of the COVID-19 pandemic by the World Health Organization (WHO) in 2020.

Currently, the world is facing the pandemic caused by the new coronavirus, which is highly transmissible, bringing several impacts of morbidity and mortality on the health of the entire population, influenced by different factors, such as age and associated preexisting conditions². Thus, the health team's understanding of the most common clinical, laboratory and radiological characteristics in this

public can guide the assistance provided, qualifying care and minimizing complications³. In February 2019, given the saturation of health systems in a relatively short space of time in the state of Pernambuco, there was a need to expand the supply of beds through the creation of campaign hospitals to meet the demand for hospitalizations among COVID patients -194. Considering the behavior of the disease and the search for intensive care beds, occupation in the public network with 94% and, in the private network, 90%⁵. As well as the infirmary beds, the occupation of 79% and 51% in public and private networks, respectively⁶. The new coronavirus has the potential to generate rapid and large demand for hospital beds to treat infected patients, mixing with the need for Campaign Hospitals, whose main characteristic is a hospital structure that can be put into operation quickly, on a temporary basis, and, in most cases, aimed at caring for patients with similar clinical conditions, as a consequence of pandemics or natural or human-caused catastrophes⁷. It is important to emphasize that this is a disease without a specific treatment, and that, in the first cases, it proved to be capable of generating high demand for the need for hospitalization in hospital beds⁸. Campaign Hospitals were used on a world scale, for the last time, for the treatment of the Spanish flu pandemic, also a viral respiratory disease, for over a century⁹. The emergency caused by the new coronavirus through the first cases described in Wuhan, capital of the Hubei province in China in November 2019, left the world on alert because it is a new disease, caused by a respiratory virus¹⁰. It is important to emphasize that Field Hospitals, regardless of the reasons and urgency of their construction, must be planned, built and operated always thinking about the quality of care provided to patients and the safety of the health professionals responsible for operating the unit¹¹.

METHODS

Study design and population: This is a study descriptive and retrospective of patients diagnosed with COVID-19, hospitalized in a field hospital in the city of Recife in the period from April 2020 to September 2020. As an inclusion criterion, it was considered COVID-19 and exclusion cases were patients admitted to other services, coming to the studied hospital from the first or more recurrence. Data were obtained through a detailed analysis of medical records and were recorded in a standardized notification form by the Ministry of Health for Severe Acute Respiratory Syndrome (SRAG), containing patient identification, demographic data, clinical evolution and complementary tests. The information was registered through the elaboration of an Excel spreadsheet, containing the variables and the results obtained from the analysis performed using tabwin.

General methodology for completing the Severe Acute Respiratory Syndrome notification form: Information related to SRAG, reported by the attending physicians, was recorded in closed fields with three response alternatives:

- 1- yes, if the symptom/sign in question was reported;
- 2- no, if the symptom/sign in question was denied;
- 9- ignored, if there is no record of this symptom/sign.

Demographic and identification data: The patient's identification number and the date of admission were initially recorded, that is, when the diagnosis and/or treatment of the first episode of SARS occurred. Subsequently, through the electronic medical record (MVPEP) and the notification form, the patient's name, dates of birth and hospital discharge were obtained. Through the notification form, it was possible to obtain the age and months of the patients.

Clinical examination data: The interview data were registered during the anamnesis performed during the hospitalization period. Information from the physical examination was obtained at this time and in two other periods. The first period brings data from the natural history of the SRAG, allowing the identification of its presentation without the influence of specific therapeutic measures. The second period comprised the improvement that patients usually experience in

the first week of treatment. The last period was related to the moment of hospital discharge or death, providing clinical data after the longest period of therapeutic intervention, in most cases not coinciding with the end of treatment.

Physical exam: The main signs found in the medical records were: fever, cough, dyspnea, respiratory distress, asthenia, O₂ saturation <95 others;

Laboratory Tests

Specific to the Severe Acute Respiratory Syndrome Real-time RT-PCR tests were performed.

Statistical analysis: Descriptive statistical methods were used for analysis, such as relative and absolute frequency, proportions, means and standard deviation of categorical and numerical variables. The results were presented in percentages and graphs and tables, using Microsoft Office Excel 2010 software (version 8.1) and EpilInfoTM version 7.2.

Ethical aspects: The project was approved by the Research Ethics Committee (CAAE: 31682720.9.000.5201).

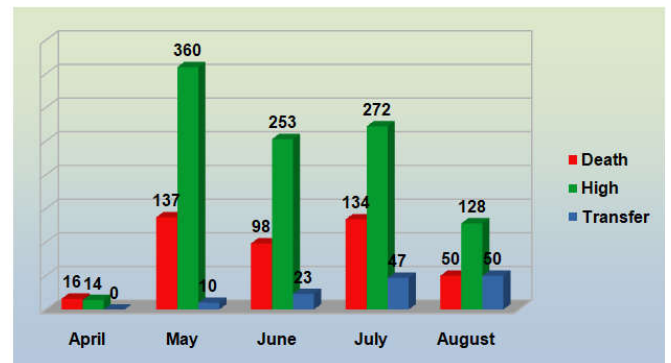
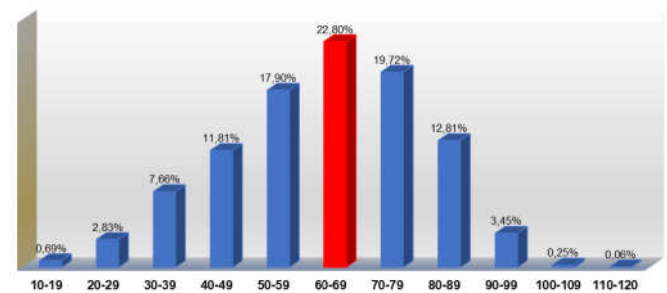
RESULTS

The Campaign Hospitals dedicated to the care of clinical patients, victims of infectious diseases, have the following basic characteristics: rapid construction, a large-scale temporary structure. We will discuss these concepts using as a reference the Campaign Hospital of the city of Recife located in the neighborhood of rabbits to fight COVID-19. From April 2020 to September 2020, 1,592 cases of Severe Acute Respiratory Syndrome were confirmed in the hospital evaluated. There were 1,502 notifications and among these 90 were not notified because they had already been notified in emergency care services with positive results (Table 1). Regarding the reported cases, 54% of the individuals were male and the most affected were the age group between sixty and sixty-nine years old 363 (22.8%), seen in (Graph 1). As for the origin of the cases in our study, the municipalities were observed according to Geres. The municipalities that are part of each Geres, respectively with the highest incidence of I Geres disease were Recife with 855(53.71%), Jaboatão dos Guararapes with 137 (8.61%) and Olinda with 85(5.34%) cases; from II Geres Carpina with 16 (1.01%) and Nazare da Mata with 9 (0.57%) cases; in III Geres Escada with 7 (0.44%) cases; in IV Geres Caruaru with 47 (2.95%) and Gravata with 20 (1.26%) cases; in V Geres Garanhuns with 3 (0.19%) cases and in VI Geres Tacaratu with 2 (0.13%) cases. In X Geres, the city of Tabira presented 3 cases (0.19%) cases; in XI Geres they presented 1 (0.6%) cases, in XII Geres Timbauba with 12 (0.75%) and Goiana 6 (0.38%) cases. In relation to VII, VIII and IX, all cities that are part of these Geres presented a case (0.6%) of COVID-19 in the study. Among the clinical manifestations presented by the patients in the study, respiratory distress was the main reason for alerting them to seek assistance.

In addition to respiratory distress, O₂ saturation <95% were also frequent symptoms, followed by dyspnea, cough, fever, anosmia and sore throat. When considering the occurrence of symptoms that are not characteristic of Severe Acute Respiratory Syndrome, gastrointestinal phenomena were also described. The main form of diagnosis was through RT PCR where it is based on real-time nucleic acid (RNA) detection of the COVID-19 virus. They represent the gold standard method for detecting infection in its acute phase, both in symptomatic and asymptomatic individuals. It should be noted that the collection of material is carried out in a hospital environment, in view of all biosafety instructions. They must be obtained from the upper airway, with nasopharyngeal or oropharyngeal swabs, preferably combined. There was a 75.53% positivity in this test in our study. The remaining cases were confirmed by epidemiological and clinical criteria.

Center for	Number of cases	Percentage
Center for endemics and medical analysis of paulista	2	0.13%
Hospital medicine center	1	0.06%
Hemope foundation	1	0.06%
Fusam regional hospital of agreste dr waldeiro ferreira	1	0.06%
Hgg dr paulo da veiga pessoa	7	0.44%
Hla diagnosis	1	0.06%
Agamenon magalhaes hospital	8	0.50%
Belarmino correia hospital	2	0.13%
Reef women's hospital	2	0.13%
Hospital of restoration	8	0.50%
Covid campaign hospital 19 de passira	2	0.13%
Hospital de especialidades de camaragibe aristeu chaves	2	0.13%
Hospital district escada dr benevolo wanderley do amaral	2	0.13%
District hospital maria amalia b bezerra de melo	2	0.13%
Dom helder camara hospital	3	0.19%
Hospital general de paudalho	1	0.06%
Getulio vargas hospital	8	0.50%
Jaboatao pleasures hospital	2	0.13%
Joao de vitoria santo antão hospital	1	0.06%
Joao murilopoliclinica de vitoria hospital	11	0.69%
Jaboatao memorial hospital	1	0.06%
Master vitalino hospital	1	0.06%
Miguel arraes hospital	9	0.57%
Adolpho pereira carneiro municipal hospital	1	0.06%
Our lady of graças hospital	1	0.06%
Oswaldo cruz hospital	1	0.06%
Otavio de freitas hospital	1	0.06%
Hospital pelopidas silveira	6	0.38%
Petronila campos hospital	1	0.06%
Hospital prontolinda	1	0.06%
Hospital regional de palmares dr silvio magalhaes	1	0.06%
Dom moura regional hospital	3	0.19%
Rui de barros correia regional hospital	1	0.06%
Hospital santo amaro	3	0.19%
Hospital sao sebastiao	2	0.13%
Hpr i temporary hospital of recife santo amaro	5	0.31%
Hpr ii provisional hospital of recife coelhos	711	44.77%
Hpr iii provisional hospital of recife imbiribeira	2	0.13%
Imip	233	14.67%
Instituto ageu magalhaes	1	0.06%
Municipal laboratory of ipojuca	1	0.06%
Dr zeferino veloso municipal laboratory	1	0.06%
Policlinica dr manojl gomes de sa	2	0.13%
Galvao polycline towers	2	0.13%
Psf bar plant	1	0.06%
Real portuguese hospital	9	0.57%
Recife	1	0.06%
Agrestin health secretary	1	0.06%
Calf health secretary	2	0.13%
Tamandare health secretary	1	0.06%
Department of health of the state of pernambuco	2	0.13%
Tabira municipal health secretary	1	0.06%
Recife municipal health secretary	1	0.06%
Elvira valenca borba mixed cutting unit	1	0.06%
Joana amelia cavalcanti mixed unit	1	0.06%
Mixed unit our lady of fatima	2	0.13%
President castelo branco mixed unit	2	0.13%
Mixed unit professor jorge oliveira lobo	1	0.06%
Santa quiteria mixed unit	1	0.06%
Upa	1	0.06%
24-hour upa timbauba pe	1	0.06%
Raft bar upa	10	0.63%
Upa boa vista dr amorim	10	0.63%
Upa cabo de santo agostinho	4	0.25%
Upa caruaru	4	0.25%
Upa caxanga	19	1.20%
Upa cured	26	1.64%
Upa old engineering	7	0.44%
Upa ibura	12	0.76%
Upa igarassu	3	0.19%
Upa imbiribeira	9	0.57%
Municipal upa of santa cruz do capibaribe	7	0.44%
Upa new discovery	7	0.44%
Upa olinda	4	0.25%
Upa paulista	7	0.44%
Upa sao lourenco da mata	7	0.44%
Upa cutters	17	1.07%
Broom upa	1	0.06%
Upae goiana temporary hospital	2	0.13%
Us 115 hospital general of sands	6	0.38%
Us 143 recife municipal laboratory	2	0.13%
Us 153 arnaldo marques polyclinic and maternity	75	4.72%
Us 159 polyclinical agamenon magalhaes	20	1.26%
Us 167 prof barros lima mixed unit	60	3.78%
Us 169 amary coutinho polycline	96	6.05%
Grand total	1,502	100.00%

(49.43%) of the cases. Already (27.32) evolved to death due to the disease (0.38%) discharged due to evasion, and (8.17%) cases were transferred to other hospital units as seen (Graph 2).



DISCUSSION

During the study period, according to Epidemiological Report No. 151/2020 were registered almost 2,552,265 of cases of respiratory diseases in the SUS, in the Northeast region of the country, of which the state of Pernambuco was responsible for about 23,393 of confirmed SARS cases for Covid-19, by sex. SARS is a notifiable disease; therefore, all suspected cases must be reported and investigated by the health services using the standard Information System for Notifiable Diseases (SINAN) (Brazil). This is a disease that has a high number of cases that evolve to death when associated with the new coronavirus, even considering the methods used for diagnosis, and the fact that there is no effective and free treatment provided by the Unified Health System (SUS), in which the population can be treated in a timely manner. According to our study, of the 1,592 cases included, 46% of those affected by COVID-19 were female. This situation, according to the Information Department of the Brazilian Unified Health System (DATASUS), is related to the behavior of the disease and possibly, the greater involvement of the female gender reflects the greater care that women tend to have with their own health. Among the 1,592 cases studied at the hospital, it was observed that the most affected age group were people aged between sixty and seventy years old, which is in agreement with most studies that show greater involvement in years (45.7%). This age group prevalence was also seen in the study in the same period by (FIOCRUZ, 2020). It is likely that the greater susceptibility to SARS infection in the elderly, especially in the group over 60 years of age, is due to the fact that these people live with young people at home, in addition, many have comorbidities associated with COVID-19 such as arterial hypertension systemic disease, diabetes mellitus and cardiovascular disease. The clinical manifestations presented by the study subjects did not differ from those classically found in the literature, both in terms of symptoms reported by patients and physical signs upon admission. In our sample, respiratory distress was the determining clinical sign for seeking medical care, data similar to those reported by (GHOSAL, 2020) and (Brazil, 2021). With the present study, it was possible to observe that COVID-19 associated with SRAG is present throughout the territory of Pernambuco, with cases registered in all Health Regions. COVID-19 is present in rural and urban areas, with the highest coefficients incidence in the Metropolitan Region of Recife, representing a public health problem.

For the treatment of SARS, the drug initially used in 84% of cases was azithromycin, followed by ceftriaxone 84%. For the period from April 2020 to September 2020, there was a cure in 211 of the confirmed cases (13.25%) followed by an improved discharge

This study may provide subsidies to understand the aspects involved in the occurrence of the disease, so that the prevention and coping with COVID-19 are consistent with the assistance provided by health surveillance. Considering the results found, it is necessary to develop environmental interventions that reduce risk factors, being essential the constant updating of health professionals. Thus,

REFERENCES

- Albuquerque, nlsd, & pedrosa, nl (2020). Spatial analysis of COVID-19 cases and intensive care beds in the state of Ceará, Brazil. *Ciência & Saúde Coletiva*, 25, 2461-2468.
- Brasil. Ministry of Health (MS). Integrated Health Surveillance Platform. Notification of cases by the new coronavirus (COVID-2019) [Internet]. [accessed 2020 Jun 20]. Available at: <http://plataforma.saude.gov.br/novocoronavirus/dados-abertos/> <http://plataforma.saude.gov.br/novocoronavirus/dados-abertos/>
- Ferreira, MRS 2013. The discursive construction of urban sustainability in the Microregion of Garanhuns-PE. Federal University of Sergipe (UFS). Available in: <https://ri.ufs.br/handle/riufs/4274>
- Generation of models from existing models' composition: An application to agrarian sciences. *PloS one*, 14(12), and 0214778. doi: <https://doi.org/10.1371/journal.pone.0214778>
- Ghosal, S., Sengupta, S., Majumder, M., & Sinha, B. (2020). Linear Regression Analysis to predict the number of deaths in India due to SARS-CoV2 at 6 weeks from day 0(100 cases -March 14th2020). *Diabetes & metabolic syndrome. Advance online publication*, 14(4), 311–315. doi: <https://doi.org/10.1016/j.dsx.2020.03.017>
- Laird, AK 1965. Dynamics of relative growth. *Growth, Ministry of Health [MS] (2020). Coronavirus Panel*, 29(9), 249-263. Available at: <https://covid.saude.gov.br/>
- OSWALDO CRUZ FOUNDATION (FIOCRUZ) (2020). Study points out the internalization of Covid-19 in Pernambuco. Available at: <https://portal.fiocruz.br/noticia/estudo-aponta-interiorizacao-da-covid-19-em-pernambuco>.
- Research, Society and Development, 9(6), 117963561. doi: <http://dx.doi.org/10.33448/rsd-v9i6.3561>.
- Rodriguez-Morales, AJ, Gallego, V., Escalera-Antezana, JP, Méndez, CA, Zambrano, LI, Franco Paredes, C., ... & Riskey, A. (2020). COVID-19 in Latin America: The implications of the first confirmed case in Brazil. *Travel medicine and infectious disease*, 35, 1-4. doi: 10.1016/j.tmaid.2020.101613
- Santiago, EJP, da Silva Freire, AK, Cunha Filho, M., Moreira, GR, de Almeida Ferreira, DS, & Cunha, ALX (2020). Non-linear models applicable to mortality and cases of COVID-19 in Brazil, Italy and the world.
- Santos, ALP, Figueiredo, M., Ferreira, T., Gomes-Silva, F., Moreira, G., Silva, J., & Freitas, J. (2020). Analysis and forecasting of the evolution of COVID-19 death numbers in the state of Pernambuco and Ceará using regression models. *Research, Society and Development*, 9(7), e602974551. doi: <http://dx.doi.org/10.33448/rsd-v9i7.4551>.
- Santos, ALP, Moreira, GR, Gomes-Silva, F., Brito, C., da Costa, M., Pereira, L., Maurício, RM, Azevêdo, J., Pereira, JM, Ferreira, AL, & Filho, MC (2019).
- Silver, DN, Rodrigues, W., & Bermejo, PH (2020). Temperature significantly changes COVID-19 transmission in (sub)tropical cities of Brazil. *Science of the Total Environment*, 729.1-7. It hurts: <https://doi.org/10.1016/j.scitotenv.2020.138862>
- State agency for planning and research of pernambuco – condepe/fidem. 2010. Sectoral composition of gross value added (gva). Recife: condepe/fidem.
- Von On Bertalanffy, L. 1957. Quantitative laws in metabolism and growth. *The Quarterly Review of Biology*, 32(3), 217-231. It hurts: <https://doi.org/10.1086/401873>
- World Health Organization, Who Director General's Remarks at the Media Briefing on 2019-nCoV on 11 February 2020, (2020a). Available in: <https://www.who.int/dg/speeches/detail/whodirector-general-s-remarks-at-the-media-briefing-on-2019-nv-on-11-february-2020>.
- World Health Organization, Who Director General's Remarks at the Media Briefing on 2019-nCoV on 11 March 2020, 2020b. Available at: <https://www.who.int/dg/speeches/detail/whodirector-general-s-opening-remarks-at-the-media-briefing-on-covid-19---11-march-2020>.
- YANG, W., Zhang, D., Peng, L., Zhuge, C., & Hong, L. (2020). Rational evaluation of various epidemic models based on the COVID-19 data of China. (1). arXiv preprint arXiv:2003.05666.
